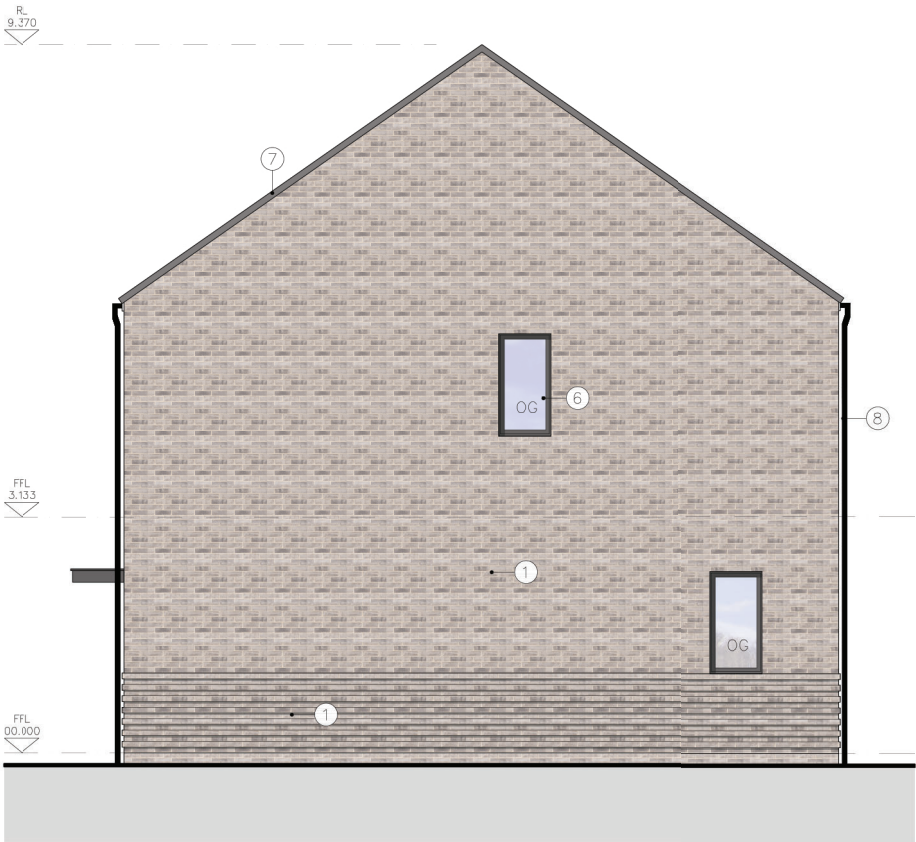
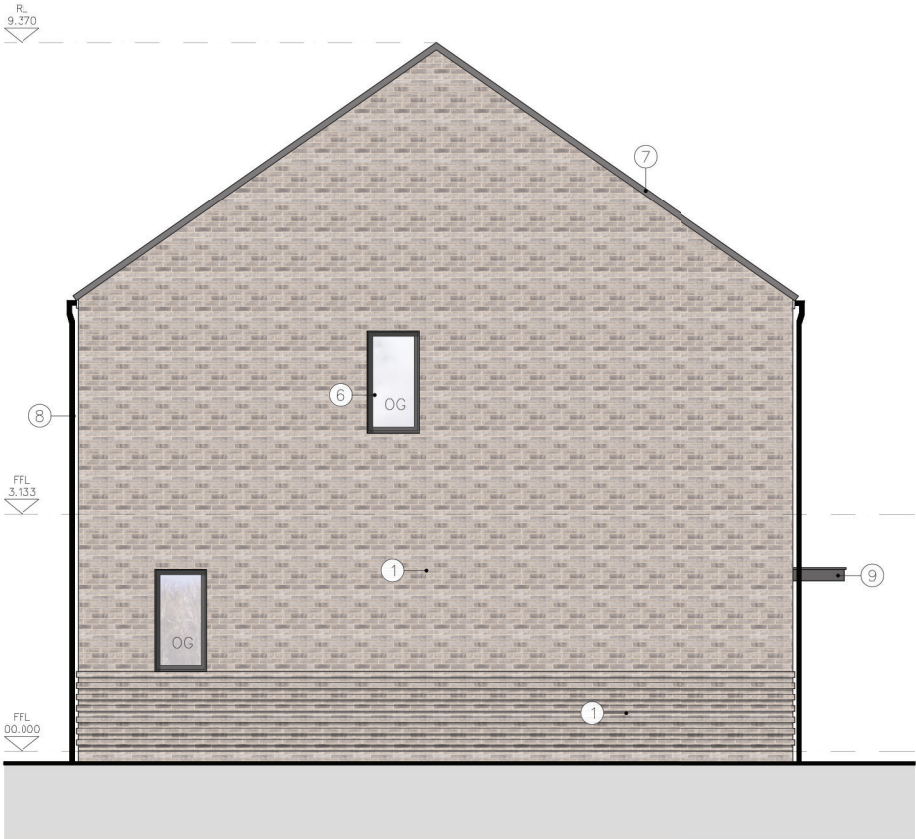


Hart Road, Thundersley

Design copyright is vested in the Company below from whom consent must be obtained for copying or reproducing this drawing.

Planning



MATERIALS LEGEND: TBC	
1	Facing Brickwork: Brick type/colour TBC via condition
2	Contrasting Facing Brickwork: Brick type/colour TBC via condition
3	Feature Protruding Brickwork: Brick type/colour TBC via condition
4	Roof Tiles Weinberger Sandtoft TLE in Grey or Similar
5	Composite Doors Colour: Anthracite Grey
6	uPVC Windows Colour: Anthracite Grey
7	uPVC Fascia boards / Soffits Colour: Grey/Black
8	uPVC Rainwater Pipes Colour: Black
9	External Porch Canopy Colour: Anthracite Grey
10	Size & Extent of PVs TBC

Plots 36 & 37 Proposed Elevations



ASHBY DESIGN

13 Arm & Sword Lane
Old Hatfield - Herts - AL9 5EH
www.AshbyDesign.co.uk
01707 270 077

Project
Hart Road,
Thundersley

Title
Plots 36 & 37 - Proposed Elevations - HTB

Scale
1:100 @ A3

Date
December '21

Drawing No.
519/19/FUL/P60.01

Drawn
CP

Checked
LS

Revision
-